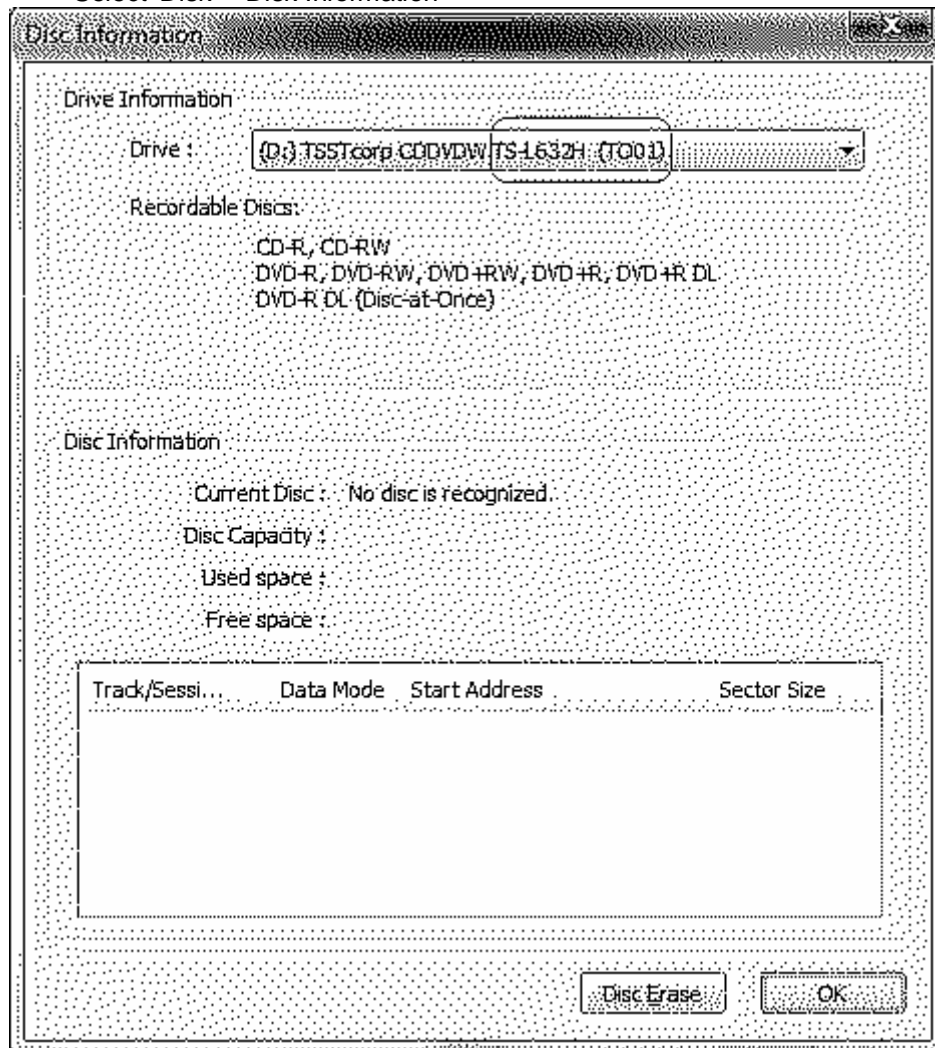


#### How to update ODD FW

1. Before update FW, make sure ODD number and FW version.
  - Run TOSHIBA disk Creator
  - Select 'Audio CD'
  - Select 'Disk' - 'Disk Information'



-If 'TS-L632H (TO01)' or 'TS-L632H (TO02)', can update FW from 'TO01' to 'TO03' or from 'TO02' to 'TO03' (got to 2.).

If 'TS-L632P (TO01)', can update FW from 'TO01' to 'TO02' (got to 2.).

If other ODD number, or FW version is latest one, can not update FW. (end)

2. load 'TSL632H\_TO03.ZIP' or 'TSL632P\_TO02.zip'.
3. decompress 'TSL632H\_TO03.ZIP' (created 'TSL632H\_TO03.exe') or 'TSL632P\_TO02.ZIP' (created 'TSL632P\_TO02.exe')
4. load 'TSL632H\_TO03.exe' or 'TSL632P\_TO02.exe' to target unit.
5. run 'TSL632H\_TO03.exe' or 'TSL632P\_TO02.exe' on windows.
6. will update FW to latest one.

#### How to confirm update FW

1. - Run TOSHIBA disk Creator
  - Select 'Audio CD'
  - Select 'Disk' - 'Disk Information'

If 'TS-L632H (TO03)' or 'TS-L632P (TO02)', it is ok.